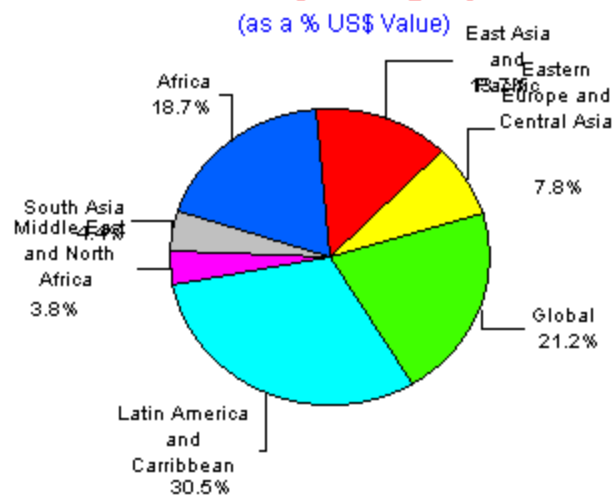
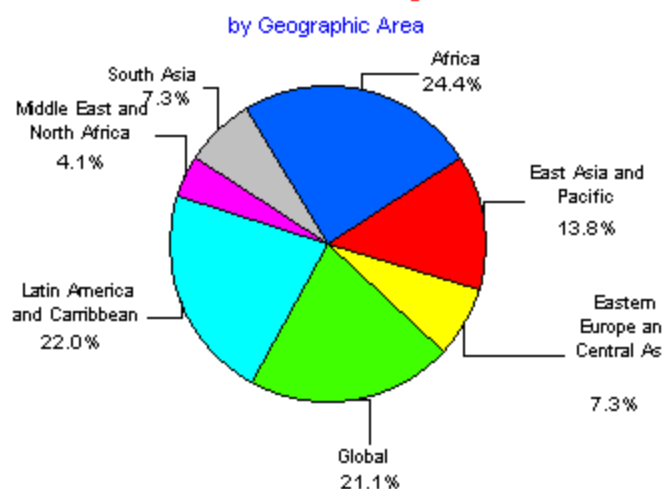


# ESMAP PORTFOLIO AT A GLANCE AS OF DECEMBER 31, 2003

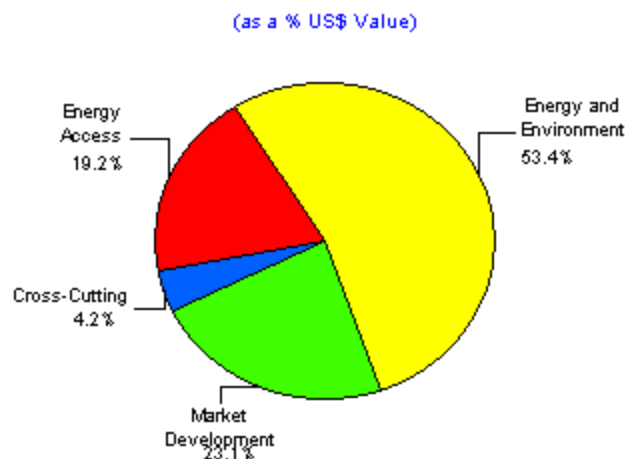
## Breakdown by Geographic Area



## Number of Projects



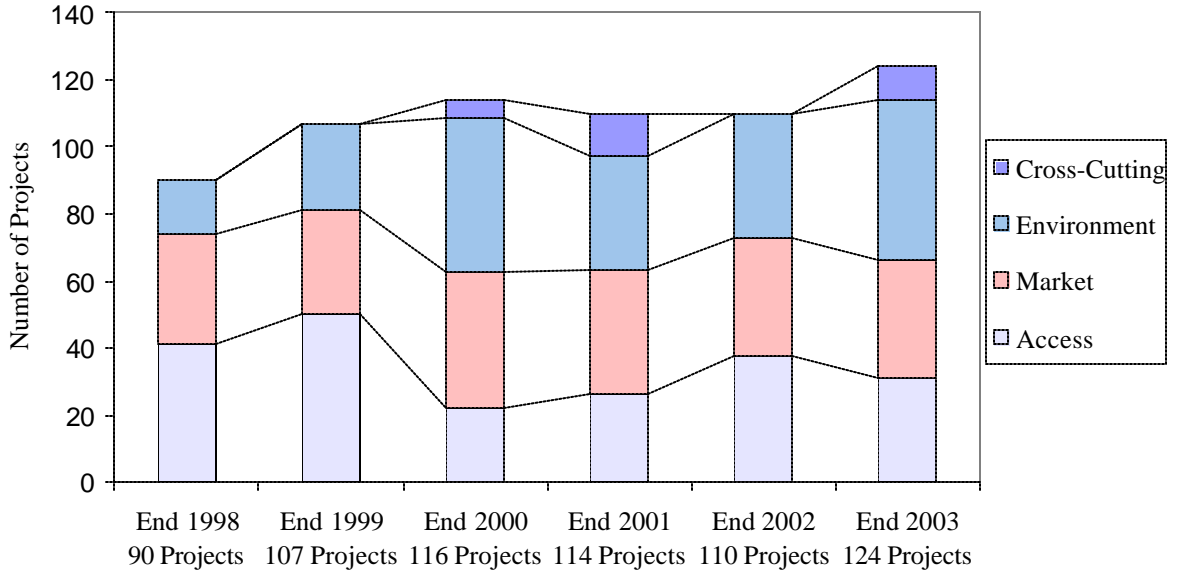
## Breakdown by Strategic Area



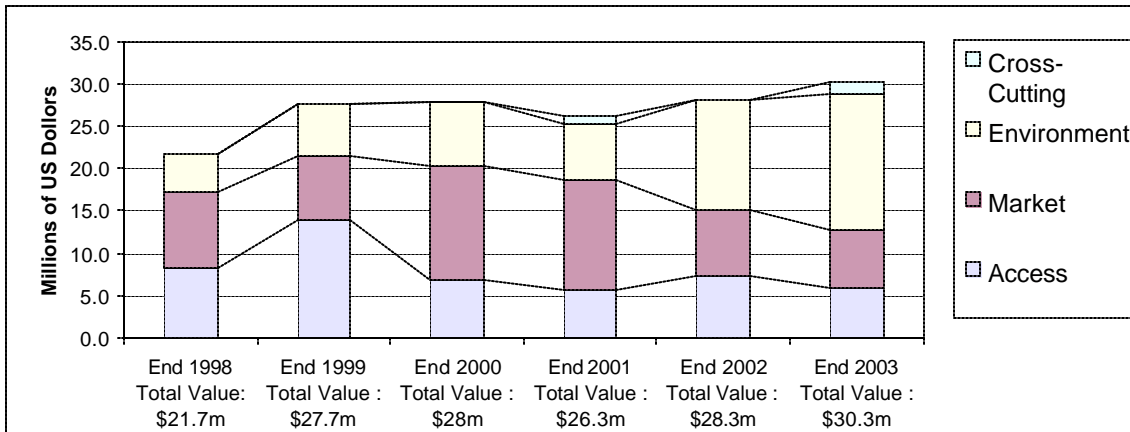
## Number of Projects



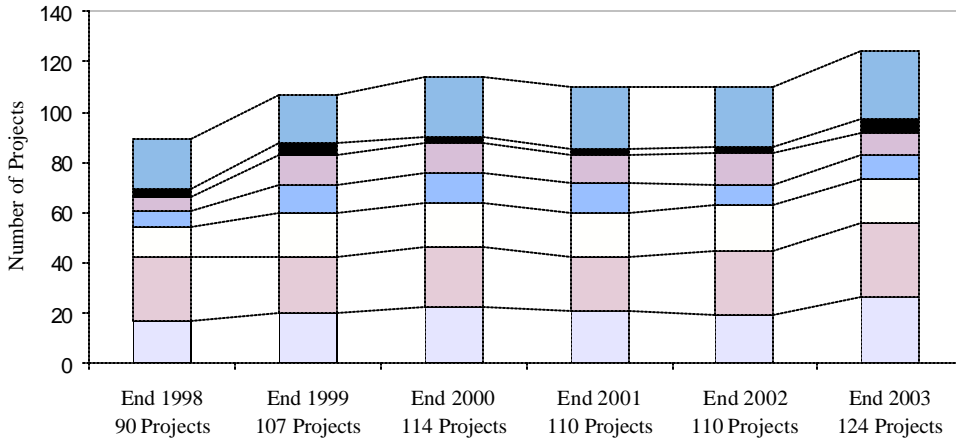
**EVOLUTION OF ESMAP PORTFOLIO (1998-2003)**  
*Evolution of Portfolio by Strategic Area 1998-2003*  
 By Number of Projects



**By Value of ESMAP Funding**

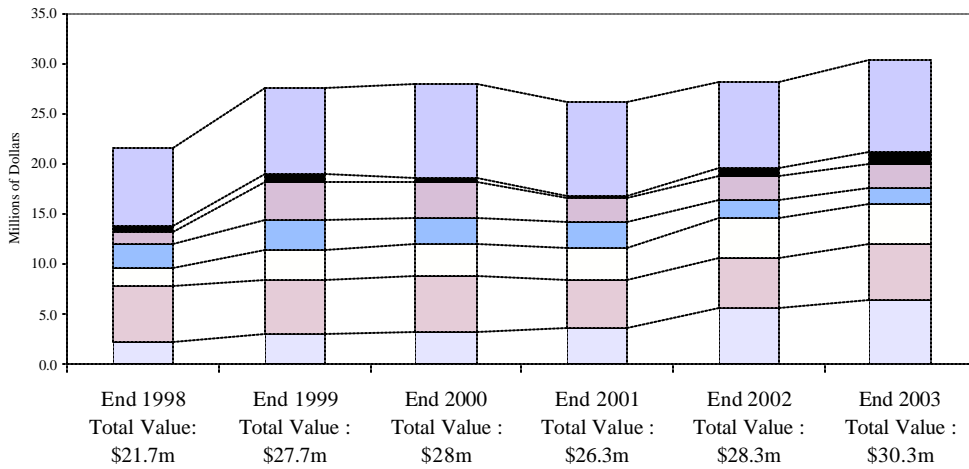


**Regional Distribution of Portfolio 1998-2003  
By Number of Projects**



- Latin America & Caribbean
- Middle East & North Africa
- Europe & Central Asia
- South Asia
- East Asia & Pacific
- Africa
- Global

**Regional Distribution of Portfolio 1998-2003  
By Value of ESMAP Funding**



- Latin America & Caribbean
- Middle East & North Africa
- Europe & Central Asia
- South Asia
- East Asia & Pacific
- Africa
- Global