

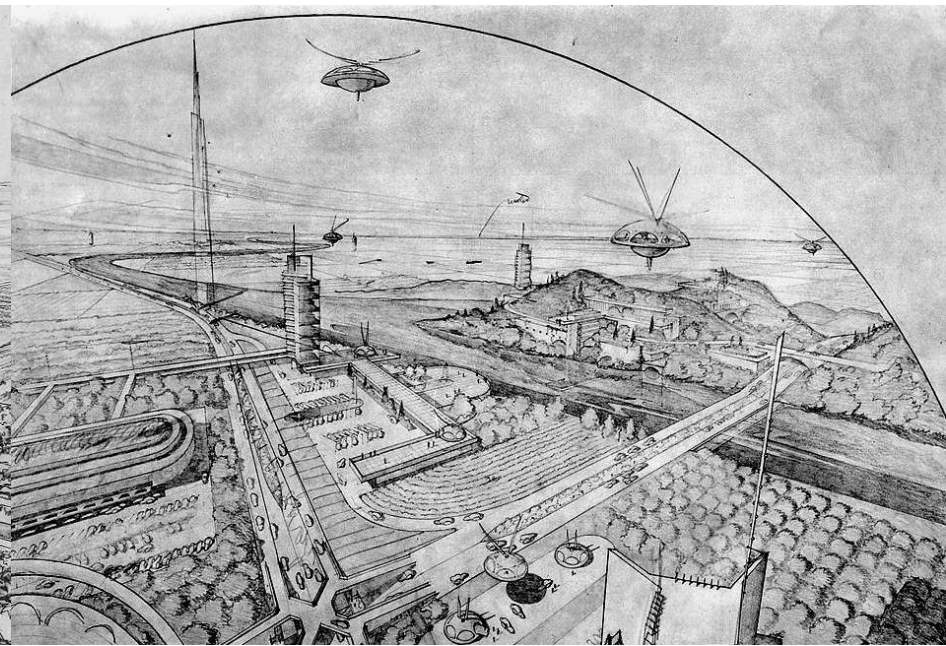
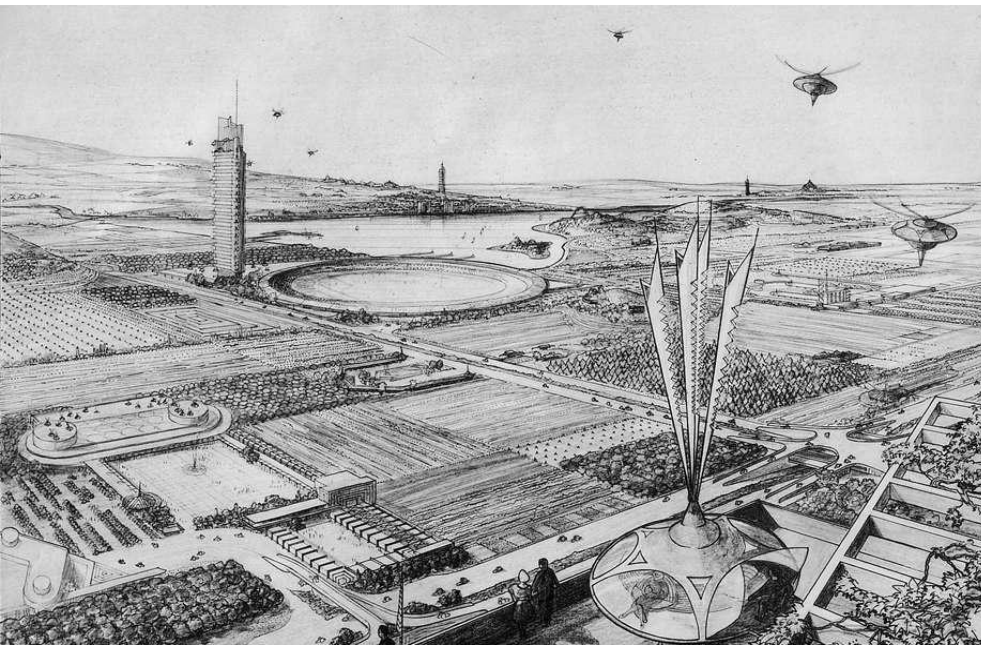
An aerial photograph of Los Angeles, California, taken during the golden hour of sunset. The city's skyline is visible in the background, with several prominent skyscrapers. The foreground shows a dense urban area with a mix of low-rise buildings, parking lots, and a multi-lane highway with traffic. The overall atmosphere is hazy and warm due to the low sun.

The Future of Cities

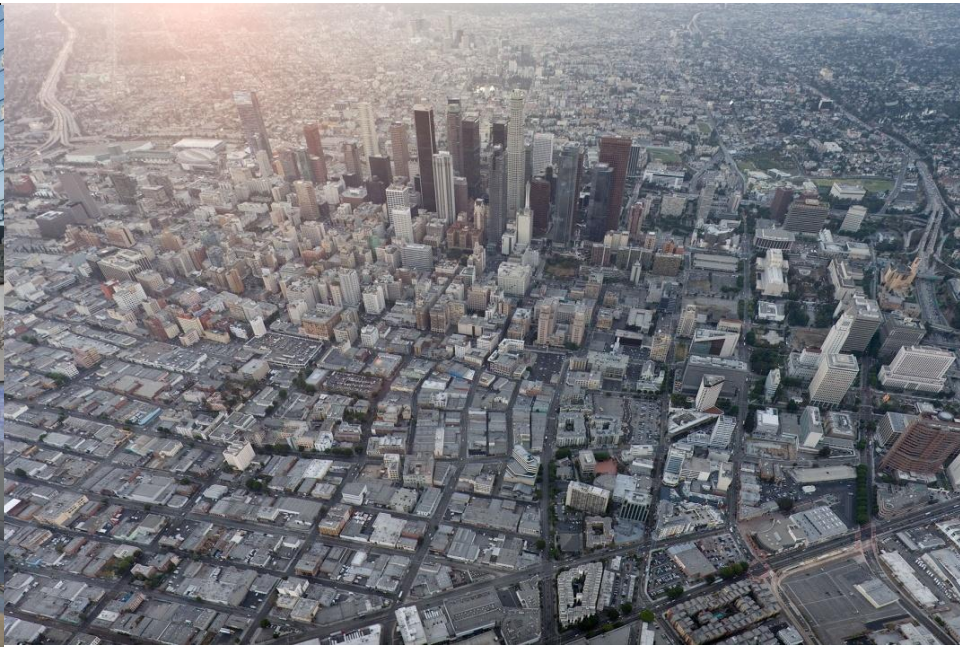
Michael Maltzan, FAIA

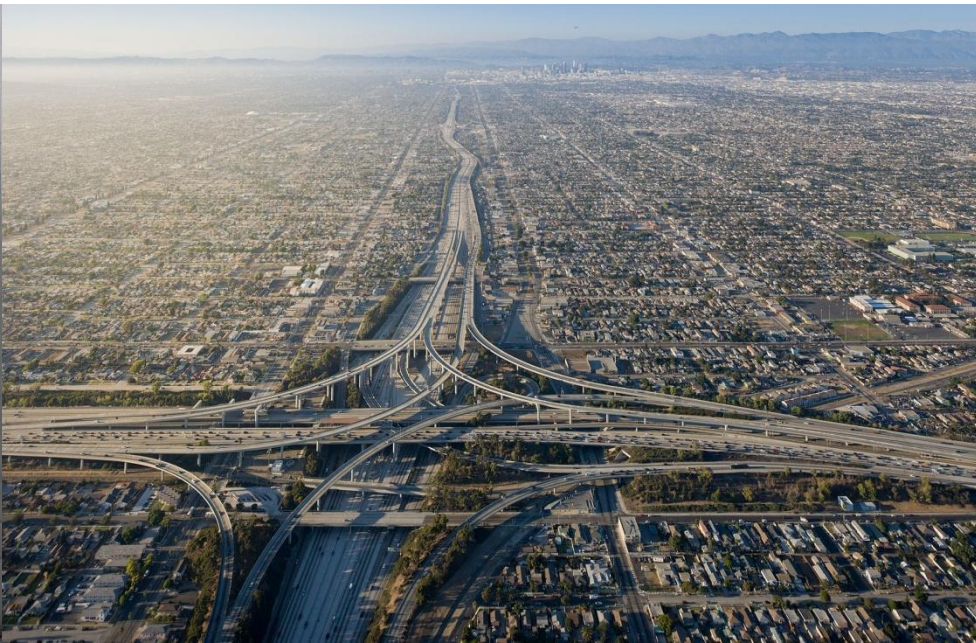
Michael Maltzan Architecture

Los Angeles, California

























LIVING





10 WEST
Santa Monica

110 SOUTH
San Pedro

110 NORTH
Downtown

Pico Bl
Convention
Center
NEXT RIGHT

Santa Monica Fwy
WEST

Harbor Fwy
SOUTH



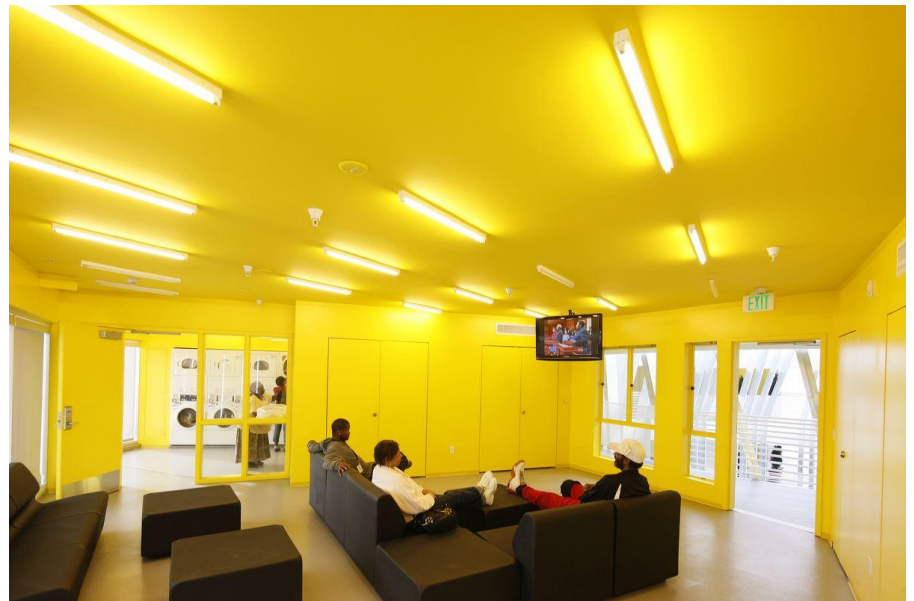
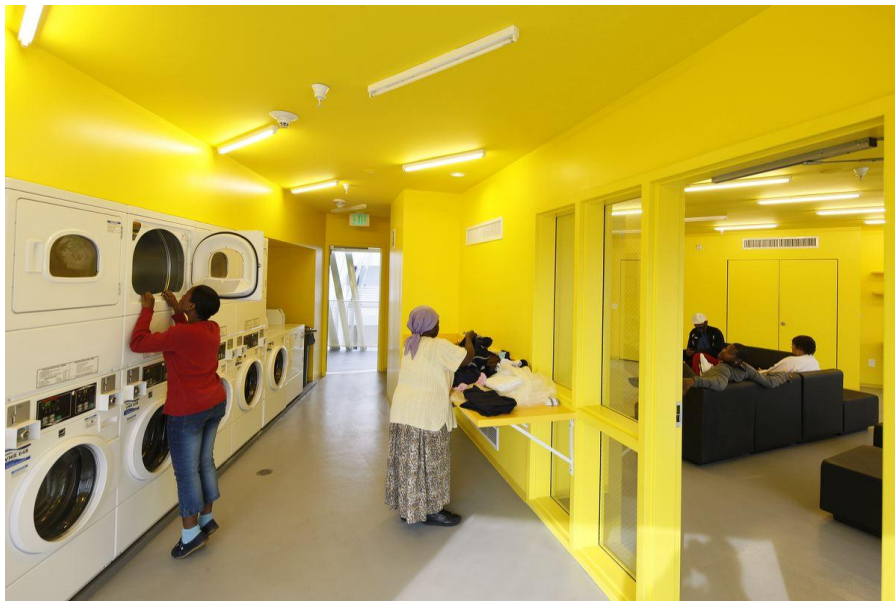
Venice Bl

1400 SOUTH HOPE

DO NOT ENTER











Café

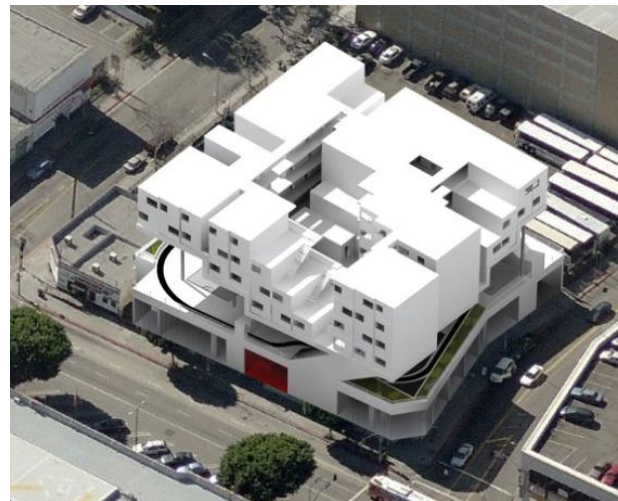
PRECIOSA LINGERIE

HOSIERY T-SHIRTS

SOCKS BOXERS

RETAIL WHOLESALE

SEALY



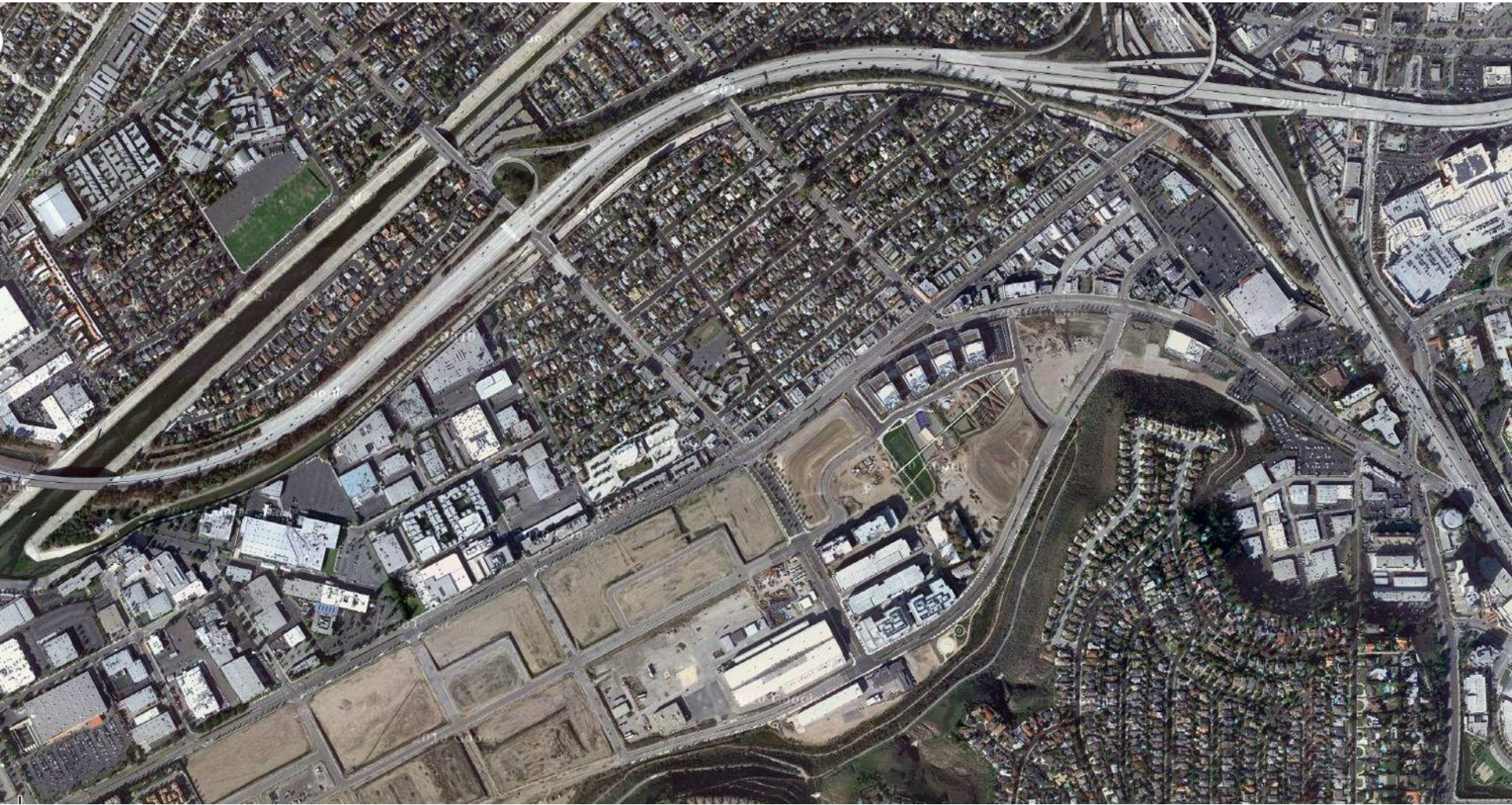








WORK & RECREATION





FUTURE OFFICES

PHASE II PARK

FUTURE OFFICES

















SUSTAINABLE CITIES





© 200













PROPOSED MASTER PLAN FOR THE FUTURE DEVELOPMENT OF THE UNION STATION DISTRICT

San Antonio Winery

Brewery Arts Colony

New Pedestrian Bridge

River Living Residential Towers

Arts Campus

To Boyle Heights Community

Tunnel Under the Barm

Landscaped Stadium

Eearthforms

Public Park

Community Facilities, Office

Extended Walk/Shade Canopy

Amphitheater and Riverbed Access

Los Angeles River

Mixed Use: Retail, Office, Cultural and Residential

Mixed Use: Light Industrial, Cleantech, Educational and Residential

PROPOSED MASTER PLAN FOR THE FUTURE DEVELOPMENT OF THE UNION STATION DISTRICT

Union Station

Climate Change Center

N Mission Rd

San Bernardino Fwy 10

East Cesar E Chavez Avenue

El Morro Bypass

Proposed Extension of Metro Gold Line

S Golden State Fwy

SECTION B

SECTION C

SECTION A

SECTION A

SECTION D

SECTION E

SECTION B

SECTION C

SECTION D

SECTION E

SECTION F

MOBILITY





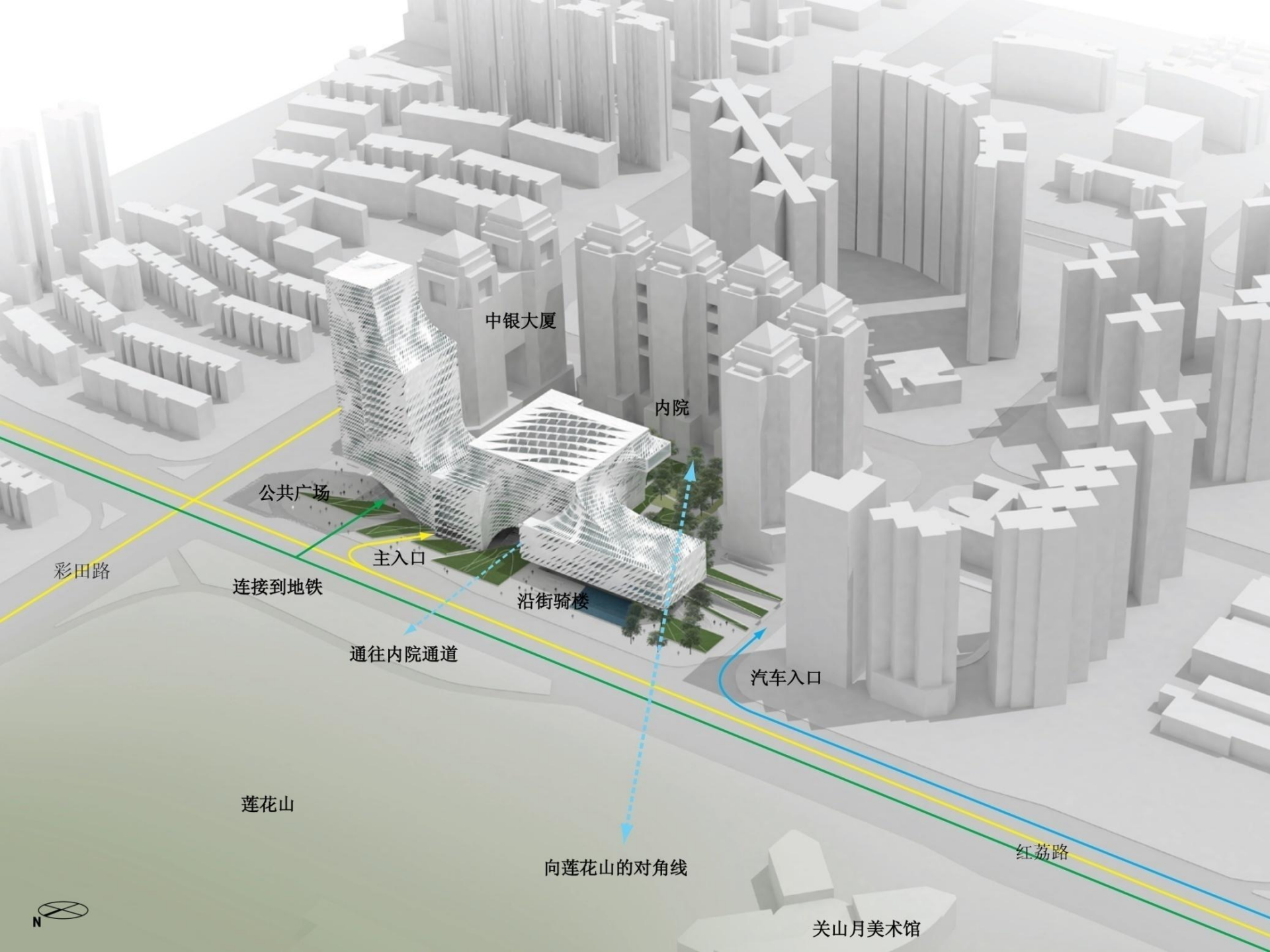






DENSITY





中银大厦

内院

公共广场

彩田路

连接到地铁

主入口

沿街骑楼

通往内院通道

汽车入口

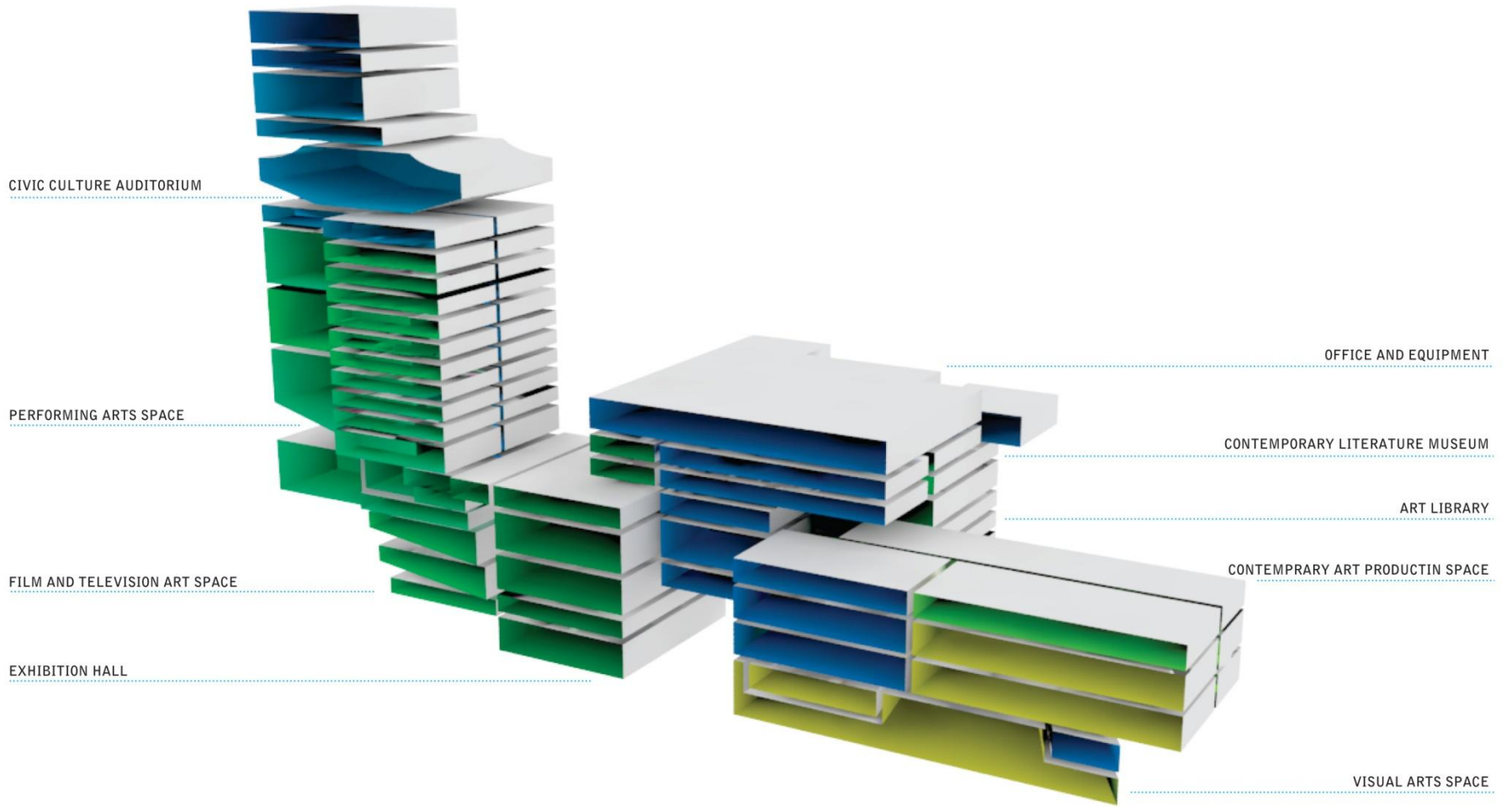
莲花山

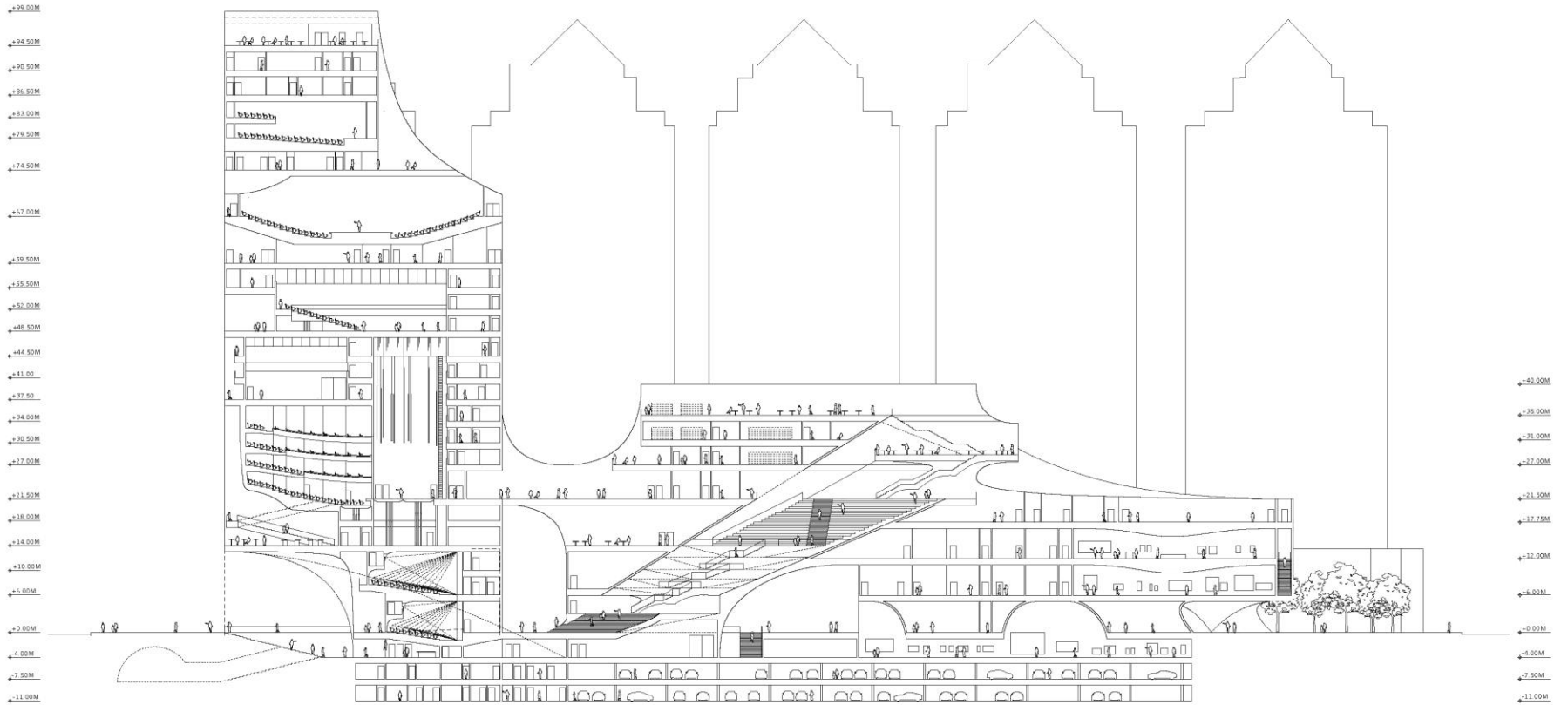
向莲花山的对角线

红荔路

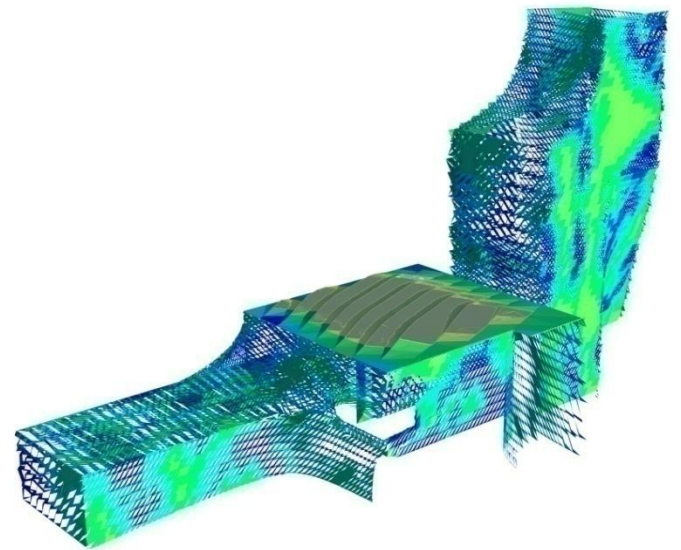
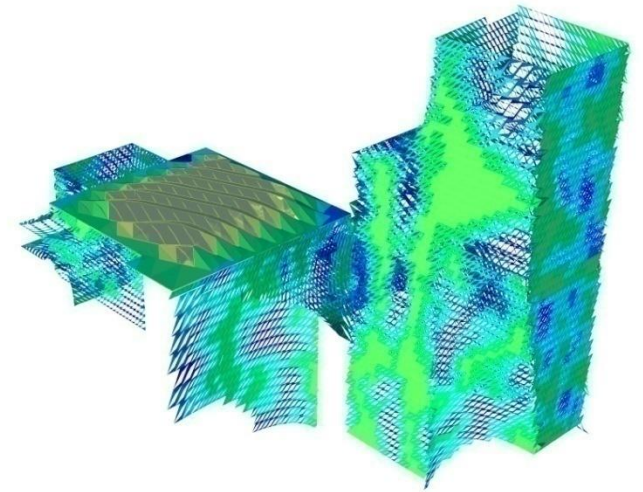
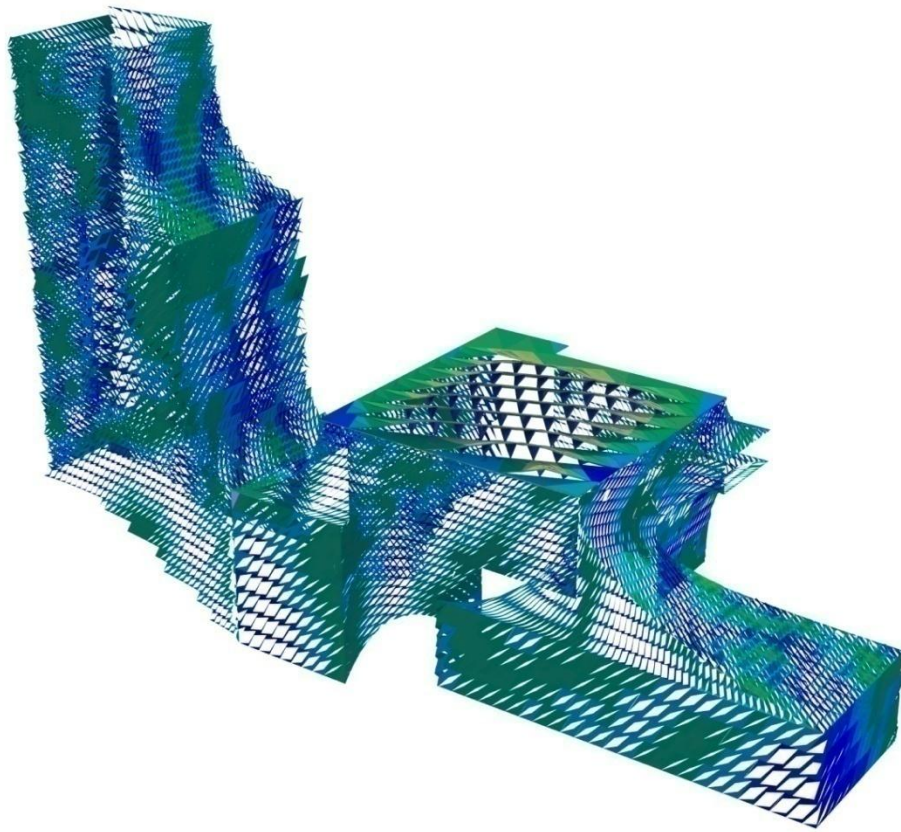
关山月美术馆

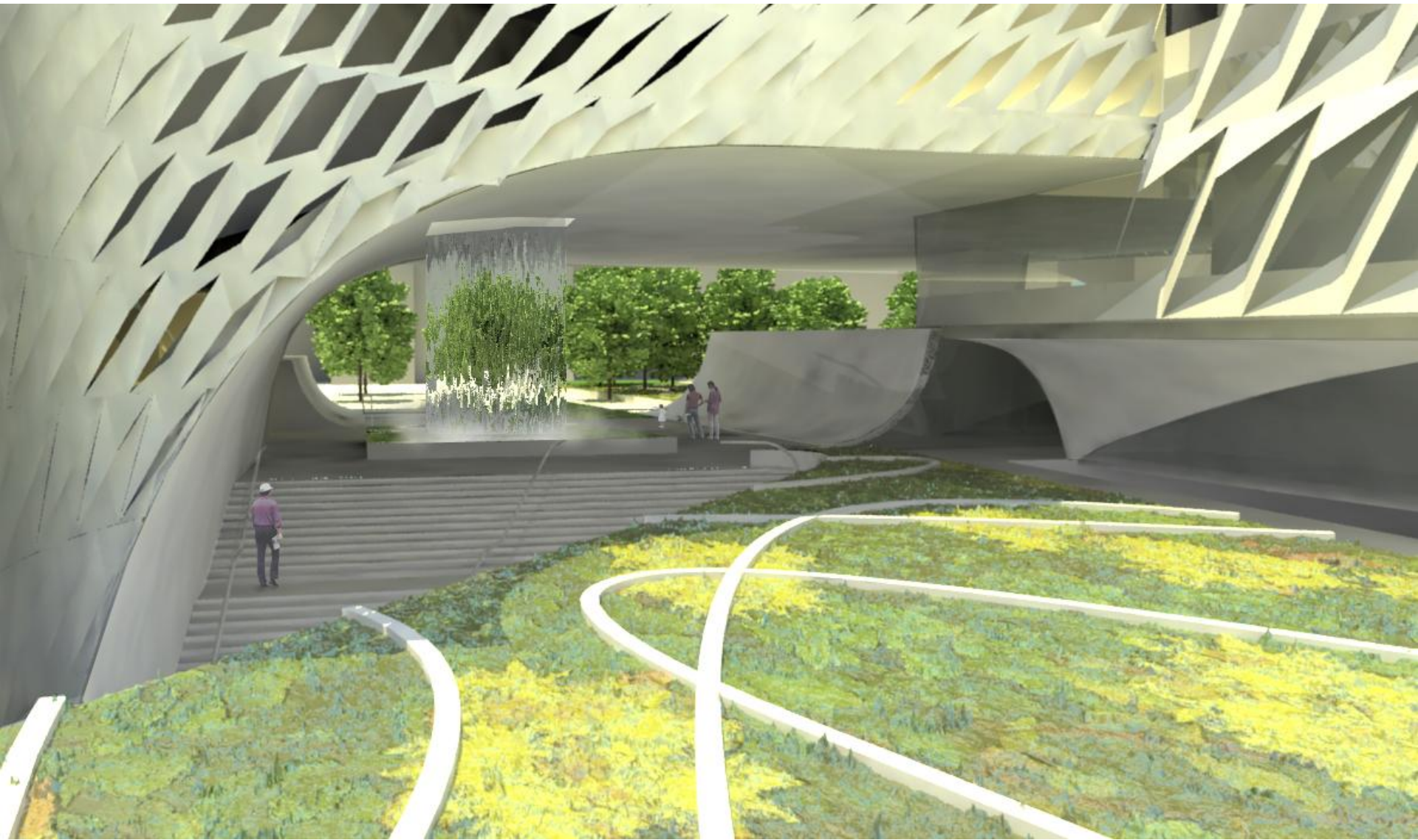


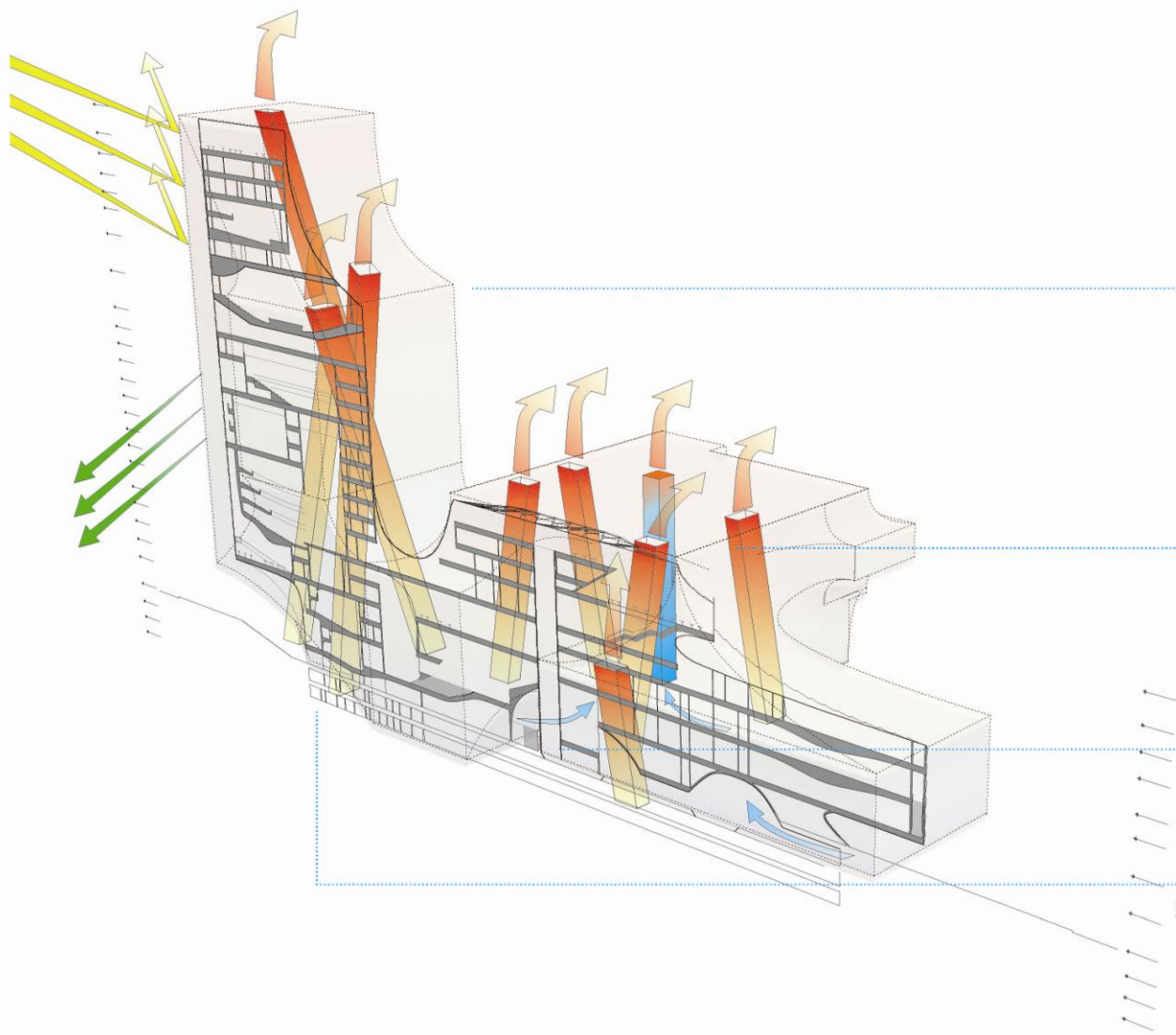












垂直接线集中在建筑的南侧。
包括两组快速电梯，用来支持每个表演空间，
以及两部停靠每层的工作人员电梯。

围绕垂直中间庭院的流线连接展览，
艺术，图书馆以及文学博物馆等项目。

驾车的参观者可通过三组电梯
到达入口层的卖票处。

乘坐地铁的参观者直接通过基地东侧进入建筑。



